

# Chem-Impex International, Inc.

---

**Tel:** (630) 766-2112

**E-mail:** sales@chemimpex.com

**Shipping and Correspondence:**

935 Dillon Drive

Wood Dale, IL 60191

**Fax:** (630) 766-2218

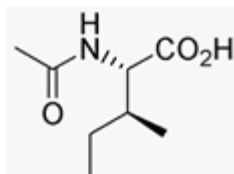
**Web site:** www.chemimpex.com

**Manufacturing site:**

825 Dillon Drive

Wood Dale, IL 60191

---



## Product Specifications

<b>Catalogue Number</b>	02615
<b>Product</b>	<b>Acetyl-L-isoleucine</b>
	Ac-L-Ile-OH
<b>CAS Number</b>	3077-46-1
<b>Molecular Formula</b>	C <sub>8</sub> H <sub>15</sub> NO <sub>3</sub>
<b>Molecular Weight</b>	173.22

---

<b>Appearance</b>	White to off-white crystalline powder
<b>Solubility</b>	Clear solution (0.3 g in 2 mL MeOH)
<b>Melting Point</b>	149 - 151 °C
<b>Elemental Analysis (Theory)</b>	≤ 5% (C, H, N)
<b>Water Content (Karl Fisher)</b>	≤ 1%
<b>Optical Rotation</b>	[α] <sup>20</sup> <sub>D</sub> = 12 ± 1 ° (C=1 in MeOH)
<b>Infrared Spectrum</b>	Conforms to structure
<b>Analysis by Mass Spectra</b>	Conforms to standard
<b>Loss on Drying</b>	≤ 1% (70 °C, 2h)
<b><sup>1</sup>H NMR</b>	Conforms to structure
<b>Purity by HPLC</b>	≥ 99%
<b>Storage</b>	Store at RT

**For Laboratory Use Only**