

Chem-Impex International, Inc.

Tel: (630) 766-2112

E-mail: sales@chemimpex.com

Shipping and Correspondence:

935 Dillon Drive

Wood Dale, IL 60191

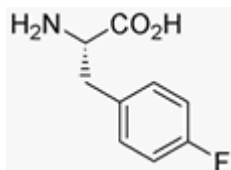
Fax: (630) 766-2218

Web site: www.chemimpex.com

Manufacturing site:

825 Dillon Drive

Wood Dale, IL 60191



Product Specifications

Catalogue Number	02572
Product	4-Fluoro-L-phenylalanine L-Phe(4-F)-OH <i>p</i> -Fluoro-L-phenylalanine
CAS Number	1132-68-9
Molecular Formula	C ₉ H ₁₀ FNO ₂
Molecular Weight	183.2

Warnings	<i>Toxic!</i>
Synonym 3	(S)-2-Amino-3-(4-fluorophenyl)propionic acid
Appearance	White to off-white powder
Melting Point	211-213 °C (dec.)
Chiral HPLC	≥ 99% (ee)
Purity by HPLC	≥ 99%
Storage	Store at 0-8°C

For Laboratory Use Only