

# *Chem-Impex International, Inc.*

---

**Tel:** (630) 766-2112

**E-mail:** sales@chemimpex.com

**Shipping and Correspondence:**

935 Dillon Drive

Wood Dale, IL 60191

**Fax:** (630) 766-2218

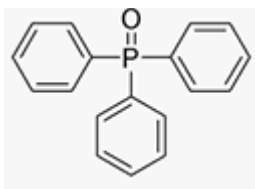
**Web site:** www.chemimpex.com

**Manufacturing site:**

825 Dillon Drive

Wood Dale, IL 60191

---



## *Product Specifications*

|                          |                                    |
|--------------------------|------------------------------------|
| <b>Catalogue Number</b>  | 02366                              |
| <b>Product</b>           | <b>Triphenylphosphine oxide</b>    |
| <b>CAS Number</b>        | 791-28-6                           |
| <b>Molecular Formula</b> | C <sub>18</sub> H <sub>15</sub> OP |
| <b>Molecular Weight</b>  | 278.3                              |

---

|                       |                      |
|-----------------------|----------------------|
| <b>Appearance</b>     | White crystal powder |
| <b>Loss on Drying</b> | ≤ 1%                 |
| <b>Assay</b>          | ≥ 99%                |
| <b>Storage</b>        | Store at RT          |

**For Laboratory Use Only**