

# Chem-Impex International, Inc.

---

**Tel:** (630) 766-2112

**E-mail:** sales@chemimpex.com

**Shipping and Correspondence:**

935 Dillon Drive

Wood Dale, IL 60191

**Fax:** (630) 766-2218

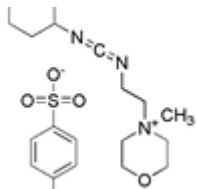
**Web site:** www.chemimpex.com

**Manufacturing site:**

825 Dillon Drive

Wood Dale, IL 60191

---



## Product Specifications

<b>Catalogue Number</b>	02297
<b>Product</b>	<b>N-Cyclohexyl-N'-(2-morpholinoethyl) carbodiimide methyl-p-toluenesulfonate</b>
	Morpho-CDI
<b>CAS Number</b>	2491-17-0
<b>Molecular Formula</b>	C <sub>14</sub> H <sub>26</sub> N <sub>3</sub> O•C <sub>7</sub> H <sub>7</sub> O <sub>3</sub> S
<b>Molecular Weight</b>	423.6
<hr/>	
<b>Appearance</b>	White solid
<b>Melting Point</b>	110-118 °C
<b>Water Content (Karl Fisher)</b>	≤ 0.5%
<b><sup>1</sup>H NMR</b>	Conforms to structure
<b>Purity</b>	≥ 96% (NMR)
<b>Storage</b>	Store at 0-8 °C

**For Laboratory Use Only**