

Chem-Impex International, Inc.

Tel: (630) 766-2112

E-mail: sales@chemimpex.com

Shipping and Correspondence:

935 Dillon Drive

Wood Dale, IL 60191

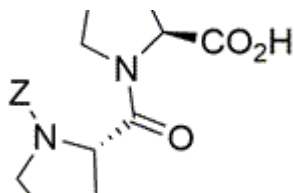
Fax: (630) 766-2218

Web site: www.chemimpex.com

Manufacturing site:

825 Dillon Drive

Wood Dale, IL 60191



Product Specifications

Catalogue Number	02243
Product	Z-Pro-Pro-OH Z-L-prolyl-L-proline
CAS Number	7360-23-8
Molecular Formula	C ₁₈ H ₂₂ N ₂ O ₅
Molecular Weight	346.38

Appearance	White to off-white solid
Analysis by Mass Spectra	Conforms to standard
¹ H NMR	Conforms to structure
Chiral HPLC	≥ 99% (ee)
D-Enantiomer	≤ 1.0%
Purity by HPLC	≥ 98%
Storage	Store at 0 - 8 °C

For Laboratory Use Only