

# Chem-Impex International, Inc.

---

**Tel:** (630) 766-2112

**E-mail:** sales@chemimpex.com

**Shipping and Correspondence:**

935 Dillon Drive

Wood Dale, IL 60191

**Fax:** (630) 766-2218

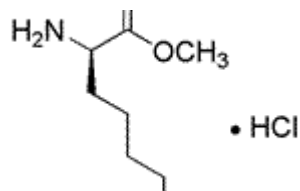
**Web site:** www.chemimpex.com

**Manufacturing site:**

825 Dillon Drive

Wood Dale, IL 60191

---



## Product Specifications

---

<b>Catalogue Number</b>	02214
<b>Product</b>	<b><i>N</i><sup>ε</sup>-<i>Z</i>-<i>D</i>-lysine methyl ester hydrochloride</b> D-Lys(Z)-OMe•HCl
<b>CAS Number</b>	145586-17-0, 1158-35-6
<b>Molecular Formula</b>	C <sub>15</sub> H <sub>22</sub> N <sub>2</sub> O <sub>4</sub> •HCl
<b>Molecular Weight</b>	330.81

---

<b>Appearance</b>	White powder
<b>Solubility</b>	Clear solution (0.3 g in 2 mL H <sub>2</sub> O)
<b>Melting Point</b>	110 - 125 °C
<b>Water Content (Karl Fisher)</b>	≤ 1%
<b>Optical Rotation</b>	[α] <sub>D</sub> <sup>20</sup> = -15.5 ± 2 ° (C=2 in H <sub>2</sub> O)
<b>Infrared Spectrum</b>	Conforms to structure
<b>Analysis by Mass Spectra</b>	Conforms to standard
<b>Loss on Drying</b>	≤ 1% (50 °C, 2h)
<b><sup>1</sup>H NMR</b>	Conforms to structure
<b>Purity by HPLC</b>	≥ 98%
<b>Storage</b>	Store at 0 - 8 °C

**For Laboratory Use Only**