

Chem-Impex International, Inc.

Tel: (630) 766-2112

E-mail: sales@chemimpex.com

Shipping and Correspondence:

935 Dillon Drive

Wood Dale, IL 60191

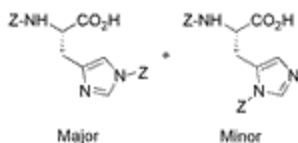
Fax: (630) 766-2218

Web site: www.chemimpex.com

Manufacturing site:

825 Dillon Drive

Wood Dale, IL 60191



Product Specifications

Catalogue Number	02188
Product	<i>N</i>^α-<i>N</i>^{im}-Bis-Z-L-histidine·Ethanol
	Z-L-His(Z)-OH·EtOH
CAS Number	35016-67-2 (net.)
Molecular Formula	C ₂₄ H ₂₇ N ₃ O ₇
Molecular Weight	469.49
<hr/>	
Appearance	White powder
Solubility	Clear solution (0.3 g in 2 mL DMF)
Water Content (Karl Fisher)	≤ 1.0%
Analysis by Mass Spectra	Conforms to standard
Purity by HPLC	≥ 98%
Storage	Store at 0-8 °C

For Laboratory Use Only