

Chem-Impex International, Inc.

Tel: (630) 766-2112

E-mail: sales@chemimpex.com

Shipping and Correspondence:

935 Dillon Drive

Wood Dale, IL 60191

Fax: (630) 766-2218

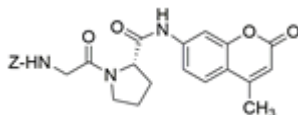
Web site: www.chemimpex.com

Manufacturing site:

825 Dillon Drive

Wood Dale, IL 60191

Product Specifications



Catalogue Number 02183

Product **Z-Gly-Pro-AMC**

Z-L-glycyl-L-proline-7-amido-4-methylcoumarin

CAS Number 68542-93-8

Molecular Formula C₂₅H₂₅N₃O₆

Molecular Weight 463.49

Appearance White powder

Appearance of Solution Clear, colorless solution (50 mg/mL in methanol)

Water Content (Karl Fisher) ≤ 0.6%

TLC System Chloroform/Methanol/Acetic acid 90/8/2
Ethylacetate/Pyridine/Acetic acid/H₂O 60/10/3/4
Plate : Silicagel 60 F254
Detected by : UV, ninhydrin, TMB

Related Substances AMC : ≤ 0.1%

Assay ≥ 96% (Nth : 9.07% - Elemental analysis)

Purity by TLC ≥ 99%

ESI-MS m = 463 ± 0.5 u (monoisotopic mass)

Storage Store at 0 - 8 °C

Additional Information Identification : Rf value in agreement with authentic material

For Laboratory Use Only