

# Chem-Impex International, Inc.

---

**Tel:** (630) 766-2112

**E-mail:** sales@chemimpex.com

**Shipping and Correspondence:**

935 Dillon Drive

Wood Dale, IL 60191

**Fax:** (630) 766-2218

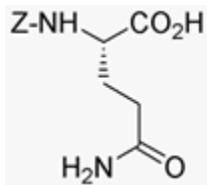
**Web site:** www.chemimpex.com

**Manufacturing site:**

825 Dillon Drive

Wood Dale, IL 60191

---



## Product Specifications

**Catalogue Number** 02157  
**Product** **Z-L-glutamine**

Z-L-Gln-OH

**CAS Number** 2650-64-8  
**Molecular Formula** C<sub>13</sub>H<sub>16</sub>N<sub>2</sub>O<sub>5</sub>

**Molecular Weight** 280.3

---

**Appearance** White to off-white powder  
**Melting Point** 130-138 °C  
**Water Content (Karl Fisher)** ≤ 1.0%  
**Optical Rotation** [α]<sup>20</sup><sub>D</sub> = -4.5 to -6.5 ° (C=2 in Ethanol)  
**Related Substances** CBZ: ≤ 2.00%  
L-Glutamine: ≤ 2.00%  
CBZ-L-Glutamic acid: ≤ 1.00%  
**Purity by HPLC** ≥ 98%  
**Storage** Store at 0-8 °C

**For Laboratory Use Only**