

Chem-Impex International, Inc.

Tel: (630) 766-2112

E-mail: sales@chemimpex.com

Shipping and Correspondence:

935 Dillon Drive

Wood Dale, IL 60191

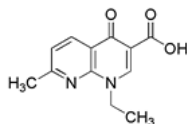
Fax: (630) 766-2218

Web site: www.chemimpex.com

Manufacturing site:

825 Dillon Drive

Wood Dale, IL 60191



Product Specifications

Catalogue Number	02038
Product	Nalidixic acid 1,4-Dihydro-1-ethyl-7-methyl-4-oxo-1,8-naphthyridine-3-carboxylic
CAS Number	389-08-2
Molecular Formula	C ₁₂ H ₁₂ N ₂ O ₃
Molecular Weight	232.2

Appearance	Almost white to slight yellow crystalline powder
Heavy Metals	≤ 20 ppm
Loss on Drying	≤ 0.5%
Assay	≥ 99% (On dry basis)
Storage	Store at RT

For Laboratory Use Only