

# Chem-Impex International, Inc.

---

**Tel:** (630) 766-2112

**E-mail:** sales@chemimpex.com

**Shipping and Correspondence:**

935 Dillon Drive

Wood Dale, IL 60191

**Fax:** (630) 766-2218

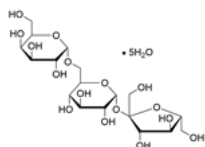
**Web site:** www.chemimpex.com

**Manufacturing site:**

825 Dillon Drive

Wood Dale, IL 60191

---



## Product Specifications

<b>Catalogue Number</b>	02022
<b>Product</b>	<b>D-Raffinose pentahydrate</b> Melitose Melitriose
<b>CAS Number</b>	17629-30-0
<b>Molecular Formula</b>	C <sub>18</sub> H <sub>32</sub> O <sub>16</sub> •5H <sub>2</sub> O
<b>Molecular Weight</b>	594.52

---

<b>Appearance</b>	White crystalline powder
<b>Solubility</b>	Clear and colorless (10% in water)
<b>Odor</b>	Characteristic
<b>Melting Point</b>	78 - 82 °C
<b>Bulk density</b>	0.40 - 0.70 g/mL
<b>Heavy Metals</b>	≤ 10 µg/g
<b>Cation</b>	Arsenic (As) : ≤ 0.5 µg/g Cadmium (Cd) : ≤ 0.5 µg/g Lead (Pb) : ≤ 1 µg/g Mercury (Hg) : ≤ 0.5 µg/g Iron (Fe) : ≤ 5 µg/g
<b>Mould and Yeast</b>	≤ 100 cfu/g
<b>Optical Rotation</b>	[α] <sup>20</sup> <sub>D</sub> = 103 - 108 °
<b>Loss on Drying</b>	13 - 17%
<b>Residual Solvents</b>	Conforms USP standard
<b>Solvent</b>	Ethanol and water
<b>Coliform Organisms</b>	≤ 10 cfu/g
<b>E. Coli, Salmonella, S.Aureus</b>	Absence
<b>Microbial Count</b>	≤ 1000 cfu/g (TPC)
<b>Particle Size</b>	≥ 95% thr' 30 mesh
<b>Residue On Ignition</b>	≤ 0.1%

# *Product Specifications*

**Catalog Number: 02022**

---

<b>Purity by HPLC</b>	$\geq 98\%$
<b>Storage</b>	Store at RT
<b>Additional Information</b>	Identification : To pass test Aflatoxins : $\leq 20$ ppb

**For Laboratory Use Only**