

# Chem-Impex International, Inc.

---

**Tel:** (630) 766-2112

**E-mail:** sales@chemimpex.com

**Shipping and Correspondence:**

935 Dillon Drive

Wood Dale, IL 60191

**Fax:** (630) 766-2218

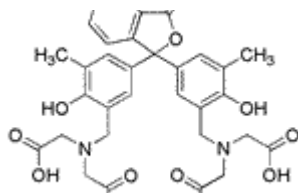
**Web site:** www.chemimpex.com

**Manufacturing site:**

825 Dillon Drive

Wood Dale, IL 60191

---



## Product Specifications

<b>Catalogue Number</b>	02021
<b>Product</b>	<b>Metalphthalein</b> Phthalein purple <i>o</i> -Cresolphthalein complexone
<b>CAS Number</b>	2411-89-4
<b>Molecular Formula</b>	C <sub>32</sub> H <sub>32</sub> N <sub>2</sub> O <sub>12</sub>
<b>Molecular Weight</b>	636.62

---

<b>Appearance</b>	Light pink to tan crystalline solid
<b>Clarity &amp; Color</b>	Clarity of solution : To pass test
<b>Grade</b>	ACS reagent
<b>Storage</b>	Store at RT
<b>Suitability</b>	Suitability as a mixed indicator for complexometry : To pass test

**For Laboratory Use Only**