

# *Chem-Impex International, Inc.*

---

**Tel:** (630) 766-2112

**E-mail:** sales@chemimpex.com

**Shipping and Correspondence:**

935 Dillon Drive

Wood Dale, IL 60191

**Fax:** (630) 766-2218

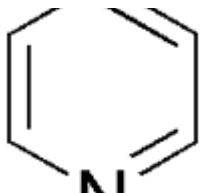
**Web site:** www.chemimpex.com

**Manufacturing site:**

825 Dillon Drive

Wood Dale, IL 60191

---



## *Product Specifications*

<b>Catalogue Number</b>	02006
<b>Product</b>	<b>Pyridine, super dry</b>
<b>CAS Number</b>	110-86-1
<b>Molecular Formula</b>	C <sub>5</sub> H <sub>5</sub> N
<b>Molecular Weight</b>	79.1
<hr/>	
<b>Appearance</b>	Colorless liquid
<b>Color (APHA)</b>	≤ 20 Ea
<b>Water Content (Karl Fisher)</b>	≤ 0.04%
<b>Purity by GC</b>	≥ 99.5%
<b>Storage</b>	Store at RT

**For Laboratory Use Only**