

# Chem-Impex International, Inc.

---

**Tel:** (630) 766-2112

**E-mail:** sales@chemimpex.com

**Shipping and Correspondence:**

935 Dillon Drive

Wood Dale, IL 60191

**Fax:** (630) 766-2218

**Web site:** www.chemimpex.com

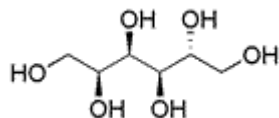
**Manufacturing site:**

825 Dillon Drive

Wood Dale, IL 60191

---

## Product Specifications



<b>Catalogue Number</b>	02003
<b>Product</b>	<b>D-Sorbitol</b> D-Glucitol
<b>CAS Number</b>	50-70-4
<b>Molecular Formula</b>	C <sub>6</sub> H <sub>14</sub> O <sub>6</sub>
<b>Molecular Weight</b>	182.2

---

<b>Appearance</b>	White free flowing or crystalline powder
<b>Cation</b>	Nickel (Ni) : ≤ 1 ppm Lead (Pb) : ≤ 0.5 ppm
<b>Water Content (Karl Fisher)</b>	≤ 1%
<b>pH</b>	4 - 6
<b>Yeast and Mold</b>	To pass test
<b>Reducing Sugars</b>	≤ 0.3%
<b>Microbial Count</b>	To pass test
<b>Residue On Ignition</b>	≤ 0.1%
<b>Assay</b>	91.0 - 100.5%
<b>Grade</b>	Meets NF/FCC Specification
<b>Storage</b>	Store at RT

**For Laboratory Use Only**