

Chem-Impex International, Inc.

Tel: (630) 766-2112

E-mail: sales@chemimpex.com

Shipping and Correspondence:

935 Dillon Drive

Wood Dale, IL 60191

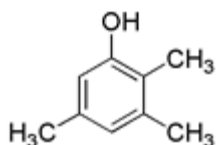
Fax: (630) 766-2218

Web site: www.chemimpex.com

Manufacturing site:

825 Dillon Drive

Wood Dale, IL 60191



Product Specifications

Catalogue Number	02001
Product	2,3,5-Trimethylphenol
	Isopseudocumenol
	6-Hydroxypseudocumene
CAS Number	697-82-5
Molecular Formula	C ₉ H ₁₂ O
Molecular Weight	136.19
<hr/>	
Appearance	White powder
Melting Point	90.0-97.0 °C
Water Content (Karl Fisher)	≤ 0.5%
¹H NMR	Conforms to structure
Purity by GC	≥ 99%
Storage	Store at 0-8 °C

For Laboratory Use Only