

Chem-Impex International, Inc.

Tel: (630) 766-2112

E-mail: sales@chemimpex.com

Shipping and Correspondence:

935 Dillon Drive

Wood Dale, IL 60191

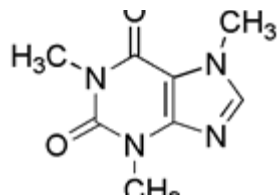
Fax: (630) 766-2218

Web site: www.chemimpex.com

Manufacturing site:

825 Dillon Drive

Wood Dale, IL 60191



Product Specifications

Catalogue Number	01972
Product	Caffeine, anhydrous 1,3,7-Trimethylxanthine, anhydrous 1,3,7-Trimethyl-2,6-dioxapurine
CAS Number	58-08-2
Molecular Formula	C ₈ H ₁₀ N ₄ O ₂
Molecular Weight	194.19

Appearance	White powder or crystalline powder
Heavy Metals	≤ 10 ppm
Water Content (Karl Fisher)	≤ 0.5% (80 °C, 4h)
Related Substances	Individual impurity : ≤ 0.1% Total impurities : ≤ 0.1%
Residue On Ignition	≤ 0.1%
Assay (anhydrous basis)	98.5 - 101.0%
Grade	Meets USP Specification
Storage	Store at RT
Additional Information	Identification : Test for A : Infrared spectrum : Conforms to structure Test B : To pass test

For Laboratory Use Only