

Chem-Impex International, Inc.

Tel: (630) 766-2112

E-mail: sales@chemimpex.com

Shipping and Correspondence:

935 Dillon Drive

Wood Dale, IL 60191

Fax: (630) 766-2218

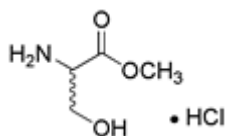
Web site: www.chemimpex.com

Manufacturing site:

825 Dillon Drive

Wood Dale, IL 60191

Product Specifications



Catalogue Number	01960
Product	DL-Serine methyl ester hydrochloride DL-Ser-OMe•HCl (<i>RS</i>)-2-Amino-3-hydroxypropionic acid methyl ester hydrochloride
CAS Number	5619-04-5
Molecular Formula	C ₄ H ₉ O ₃ N•HCl
Molecular Weight	155.58

Appearance	White to off-white crystals
Solubility	Clear solution (0.3 g in 2 mL MeOH)
Melting Point	131 - 141 °C
Water Content (Karl Fisher)	≤ 1%
Optical Rotation	[α] _D ²⁰ = 0 ± 1 ° (C=1 in MeOH)
Infrared Spectrum	Conforms to structure
Analysis by Mass Spectra	Conforms to standard
Loss on Drying	≤ 1% (60 °C, 2h)
¹H NMR	Conforms to structure
Purity by HPLC	≥ 99%
Storage	Store at 0 - 8 °C

For Laboratory Use Only