

Chem-Impex International, Inc.

Tel: (630) 766-2112

E-mail: sales@chemimpex.com

Shipping and Correspondence:

935 Dillon Drive

Wood Dale, IL 60191

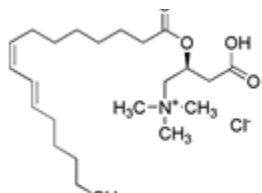
Fax: (630) 766-2218

Web site: www.chemimpex.com

Manufacturing site:

825 Dillon Drive

Wood Dale, IL 60191



Product Specifications

Catalogue Number	01867
Product	Linoleoyl-L-carnitine chloride
Molecular Formula	C ₂₅ H ₄₄ O ₄ NCl
Molecular Weight	460.1

Appearance	Viscous solid
Solubility	25 mg of linoleoyl-L-carnitine chloride per mL of chloroform
Elemental Analysis (Found)	C = 65.00 ± 0.5%; H = 11.00 ± 0.5%; N = 3.00 ± 0.5%
TLC System	Chloroform/Methanol/0.1M Sodium acetate: (4:4:1) Plate: Silica gel G R _f = 0.62 Visualized: Iodine R _f = 0.62
Purity by TLC	≥ 98%
Storage	Store at ≤ -4°C
Additional Information	Source: A synthetic preparation, using pure L-Carnitine chloride and Linoleic acid. Purification by column chromatography and solvent precipitation. Supplied as a chloroform solution. It is recommended that CHCl ₃ be removed on a rotavap and then dissolve the product in a suitable buffer. CHCl ₃ is used to avoid hydrolysis in storage.

For Laboratory Use Only