

Chem-Impex International, Inc.

Tel: (630) 766-2112

E-mail: sales@chemimpex.com

Shipping and Correspondence:

935 Dillon Drive

Wood Dale, IL 60191

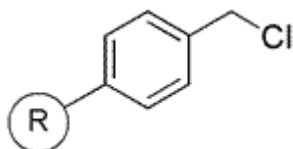
Fax: (630) 766-2218

Web site: www.chemimpex.com

Manufacturing site:

825 Dillon Drive

Wood Dale, IL 60191



Product Specifications

Catalogue Number	01808
Product	Chloromethylated polystyrene (0.4-1.0 meq/g, 100-200 mesh)
	Merrifield resin
CAS Number	55844-94-5

Appearance	Off-white fine crystalline powder
Loss on Drying	≤ 0.5%
Mesh Size	100-200 mesh
Substitution (meq/g)	0.4-1.0 meq/g
% DVB	1% DVB
Storage	Store at RT

For Laboratory Use Only