

# Chem-Impex International, Inc.

---

**Tel:** (630) 766-2112

**E-mail:** sales@chemimpex.com

**Shipping and Correspondence:**

935 Dillon Drive

Wood Dale, IL 60191

**Fax:** (630) 766-2218

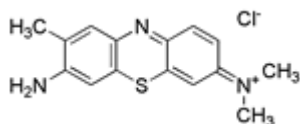
**Web site:** www.chemimpex.com

**Manufacturing site:**

825 Dillon Drive

Wood Dale, IL 60191

---



## Product Specifications

<b>Catalogue Number</b>	01804
<b>Product</b>	<b>Toluidine Blue O</b> Basic blue 17 Methylene blue T50 or T extra
<b>CAS Number</b>	92-31-9
<b>Molecular Formula</b>	C <sub>15</sub> H <sub>16</sub> N <sub>3</sub> SCl
<b>Molecular Weight</b>	305.83

---

<b>Appearance</b>	Dark green to blackish green powder
<b>Solubility</b>	Clear blue solution (0.1% in dist. water)
<b>UV Ratios</b>	Absorptivity 1% / 1 cm At $\lambda_{\max}$ 631.8 nm : $\geq 1200$
<b>Loss on Drying</b>	$\leq 8\%$ (110 °C)
<b>Sulfated Ash</b>	$\leq 23\%$
<b>Dye content</b>	$\geq 80\%$
<b>Grade</b>	Certifiable Grade
<b>Storage</b>	Store at RT

**For Laboratory Use Only**