

# Chem-Impex International, Inc.

---

**Tel: (630) 766-2112**

**E-mail: sales@chemimpex.com**

**Shipping and Correspondence:**

935 Dillon Drive

Wood Dale, IL 60191

**Fax: (630) 766-2218**

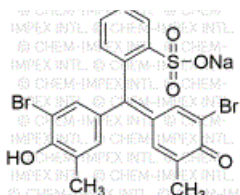
**Web site: www.chemimpex.com**

**Manufacturing site:**

825 Dillon Drive

Wood Dale, IL 60191

---



## Product Specifications

<b>Catalogue Number</b>	01772
<b>Product</b>	<b>Bromocresol purple sodium salt</b> 5',5''-Dibromo-2-cresolsulfonephthalein sodium salt
<b>CAS Number</b>	62625-30-3
<b>Molecular Formula</b>	C <sub>21</sub> H <sub>15</sub> Br <sub>2</sub> O <sub>5</sub> SNa
<b>Molecular Weight</b>	562.2

---

<b>Appearance</b>	Dark orange powder
<b>Solubility</b>	Clear solution (0.1% in distilled Water)
<b>UV Ratios</b>	UV absorption (1% in 0.1N NaOH) at 588 ± 5 nm : ≥ 870
<b>Visual Transition Range</b>	pH 5.2 (yellow) to pH 6.8 (purple)
<b>Loss on Drying</b>	≤ 5% (110 °C, 1hr)
<b>Dye content</b>	≥ 90% (by Spectrophotometry)
<b>Grade</b>	Indicator
<b>Storage</b>	Store at RT

**For Laboratory Use Only**