

Chem-Impex International, Inc.

Tel: (630) 766-2112

E-mail: sales@chemimpex.com

Shipping and Correspondence:

935 Dillon Drive

Wood Dale, IL 60191

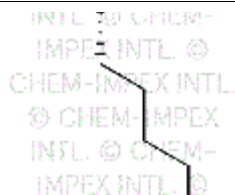
Fax: (630) 766-2218

Web site: www.chemimpex.com

Manufacturing site:

825 Dillon Drive

Wood Dale, IL 60191



Product Specifications

Catalogue Number	01742
Product	L-Lysine L-Lys-OH (S)-2,6-Diaminohexanoic acid
CAS Number	56-87-1
Molecular Formula	C ₆ H ₁₄ N ₂ O ₂
Molecular Weight	146.2
<hr/>	
Appearance	White or light yellow powder
Heavy Metals	≤ 10 ppm (Pb)
Anion	Chloride (Cl ⁻) : ≤ 0.03%
Cation	Ammonium (NH ₄) : ≤ 0.02% Iron (Fe) : ≤ 10 ppm Arsenic (As) : ≤ 1 ppm
Optical Rotation	[α] _D ²⁰ = 24 - 27 °
Loss on Drying	≤ 5%
Other Amino Acids	Meets the requirements
Residue On Ignition	≤ 0.5%
Assay	≥ 99%
Storage	Store at 0 - 8 °C

For Laboratory Use Only