

Chem-Impex International, Inc.

Tel: (630) 766-2112

E-mail: sales@chemimpex.com

Shipping and Correspondence:

935 Dillon Drive

Wood Dale, IL 60191

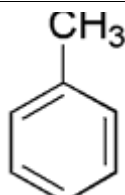
Fax: (630) 766-2218

Web site: www.chemimpex.com

Manufacturing site:

825 Dillon Drive

Wood Dale, IL 60191



Product Specifications

Catalogue Number 01740

Product **Toluene**

Methylbenzene

Phenylmethane

CAS Number 108-88-3

Molecular Formula C₇H₈

Molecular Weight 92.14

Appearance Clear, colorless liquid

Color (APHA) ≤ 10

Solubility 0.045 g in 100 mL water at 25 °C

Boiling point 111 °C (Approx.)

Density 0.87 g/mL

Sulfur Compounds ≤ 0.003% (as S)

Water Content (Karl Fisher) ≤ 0.03%

pKa 37

Purity by GC ≥ 99.5%

Grade ACS reagent

Storage Store at RT

Additional Information Residue after evaporation: ≤ 0.001%
Substances darkened by sulfuric acid: To pass test

For Laboratory Use Only