

Chem-Impex International, Inc.

Tel: (630) 766-2112

E-mail: sales@chemimpex.com

Shipping and Correspondence:

935 Dillon Drive

Wood Dale, IL 60191

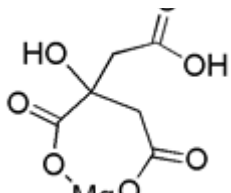
Fax: (630) 766-2218

Web site: www.chemimpex.com

Manufacturing site:

825 Dillon Drive

Wood Dale, IL 60191



Product Specifications

Catalogue Number	01719
Product	Magnesium citrate dibasic, anhydrous
CAS Number	144-23-0
Molecular Formula	C ₆ H ₆ O ₇ Mg
Molecular Weight	214.4

Appearance	White crystalline powder
Assay	Magnesium content : 10.8 - 11.8% (Complexometric titration)
Assay by titration	≥ 97% (Ex Mg, Anhydrous basis)
Storage	Store at RT

For Laboratory Use Only