

Chem-Impex International, Inc.

Tel: (630) 766-2112

E-mail: sales@chemimpex.com

Shipping and Correspondence:

935 Dillon Drive

Wood Dale, IL 60191

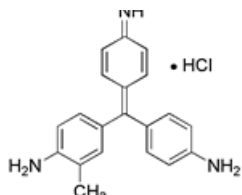
Fax: (630) 766-2218

Web site: www.chemimpex.com

Manufacturing site:

825 Dillon Drive

Wood Dale, IL 60191



Product Specifications

Catalogue Number 01710
Product **Basic fuchsin Certified**

Basic violet 14

Rosaniline

CAS Number 632-99-5

Molecular Formula C₂₀H₂₀N₃Cl

Molecular Weight 337.86

Appearance Green crystalline powder

pH 4 - 7

UV Ratios Absorption λ_{max} : 547 - 553 nm
Absorptivity (A1%, 1cm, 50% EtOH) : 2.200

Insoluble \leq 0.5% G4 crucible in methanol

Loss on Drying \leq 10%

Dye content \geq 95%

Grade Certified

Storage Store at RT

For Laboratory Use Only