

Chem-Impex International, Inc.

Tel: (630) 766-2112

E-mail: sales@chemimpex.com

Shipping and Correspondence:

935 Dillon Drive

Wood Dale, IL 60191

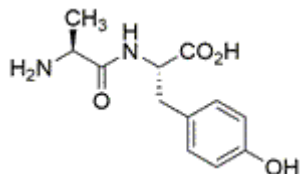
Fax: (630) 766-2218

Web site: www.chemimpex.com

Manufacturing site:

825 Dillon Drive

Wood Dale, IL 60191



Product Specifications

Catalogue Number	01675
Product	Ala-Tyr-OH L-Alanine-L-tyrosine
CAS Number	3061-88-9
Molecular Formula	C ₁₂ H ₁₆ N ₂ O ₄
Molecular Weight	252.27

Appearance	White powder
Water Content (Karl Fisher)	5.5 - 7.5%
Infrared Spectrum	Conforms to structure
Bioburden Level	≤ 10 cfu/g
Bacterial Endotoxins	≤ 10 EU/g
Assay by titration	≥ 99% (dried basis)
Storage	Store at 0 - 8 °C

For Laboratory Use Only