

Chem-Impex International, Inc.

Tel: (630) 766-2112

E-mail: sales@chemimpex.com

Shipping and Correspondence:

935 Dillon Drive

Wood Dale, IL 60191

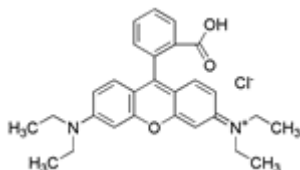
Fax: (630) 766-2218

Web site: www.chemimpex.com

Manufacturing site:

825 Dillon Drive

Wood Dale, IL 60191



Product Specifications

Catalogue Number	01626
Product	Rhodamine B Rhodamine B chloride Basic violet 10
CAS Number	81-88-9
Molecular Formula	C ₂₈ H ₃₁ ClN ₂ O ₃
Molecular Weight	479.02

Appearance	Greenish powder
pH	2 - 3
UV Ratios	λ max: 544 nm (2 mg/L water and 1 mL acetic acid)
Insoluble	\leq 0.5% (in H ₂ O)
Storage	Store at RT

For Laboratory Use Only