

Chem-Impex International, Inc.

Tel: (630) 766-2112

E-mail: sales@chemimpex.com

Shipping and Correspondence:

935 Dillon Drive

Wood Dale, IL 60191

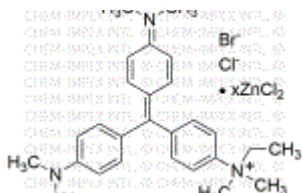
Fax: (630) 766-2218

Web site: www.chemimpex.com

Manufacturing site:

825 Dillon Drive

Wood Dale, IL 60191



Product Specifications

Catalogue Number	01615
Product	Methyl green zinc chloride salt Ethyl green CI 42590
CAS Number	7114-03-6
Molecular Formula	$C_{27}H_{35}N_3ClBr \cdot ZnCl_2$
Molecular Weight	653.24

Appearance	Green crystals
Solubility	Soluble in water, In bluish solution
Elemental Analysis (Theory)	Nitrogen content : 4.8 - 8.0%
Extinction Co-Efficient	E 632 ± 3 nm : ≥ 50000 E 423 ± 3 nm : ≥ 9000 E 314 ± 3 nm : ≥ 14000
Loss on Drying	≤ 10%
Dye content	≥ 85%
Grade	Certifiable Grade
Storage	Store at RT
Additional Information	Spectrophotometric assay 5 mgs/Ltrs. in water : At 632 ± 3 nm : 0.383 At 423 ± 3 nm : 0.069 At 314 ± 3 nm : 0.123

For Laboratory Use Only