

Chem-Impex International, Inc.

Tel: (630) 766-2112

E-mail: sales@chemimpex.com

Shipping and Correspondence:

935 Dillon Drive

Wood Dale, IL 60191

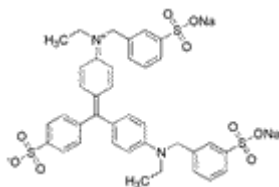
Fax: (630) 766-2218

Web site: www.chemimpex.com

Manufacturing site:

825 Dillon Drive

Wood Dale, IL 60191



Product Specifications

Catalogue Number	01610
Product	Light green SF yellowish Acid green 5 CI 42095
CAS Number	5141-20-8
Molecular Formula	C ₃₇ H ₃₄ N ₂ O ₉ S ₃ Na ₂
Molecular Weight	792.88

Appearance	Greenish yellow to dark red purple powder
Dye content	≥ 80%
Storage	Store at RT
Additional Information	UV absorption λ_{\max} 629 - 634 nm Absorptivity (on dry basis): 880-1130

For Laboratory Use Only