

# Chem-Impex International, Inc.

---

**Tel:** (630) 766-2112

**E-mail:** sales@chemimpex.com

**Shipping and Correspondence:**

935 Dillon Drive

Wood Dale, IL 60191

**Fax:** (630) 766-2218

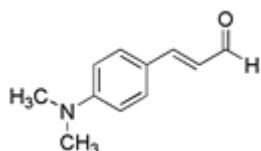
**Web site:** www.chemimpex.com

**Manufacturing site:**

825 Dillon Drive

Wood Dale, IL 60191

---



## Product Specifications

|                          |   |
|--------------------------|---|
| <b>Catalogue Number</b>  | 01594   |
| <b>Product</b>           | <b>4-(Dimethylamino)cinnamaldehyde</b><br>(2E)-3-[4-(Dimethylamino)phenyl]prop-2-enal |
| <b>CAS Number</b>        | 6203-18-5   |
| <b>Molecular Formula</b> | C <sub>11</sub> H <sub>13</sub> NO  |
| <b>Molecular Weight</b>  | 175.2   |

---

|                                    |                         |
|------------------------------------|-------------------------|
| <b>Appearance</b>                  | Yellow to orange powder |
| <b>Water Content (Karl Fisher)</b> | ≤ 0.5%                  |
| <b>Purity by HPLC</b>              | ≥ 99%                   |
| <b>Storage</b>                     | Store at 0 - 8 °C       |

**For Laboratory Use Only**