

Chem-Impex International, Inc.

Tel: (630) 766-2112

E-mail: sales@chemimpex.com

Shipping and Correspondence:

935 Dillon Drive

Wood Dale, IL 60191

Fax: (630) 766-2218

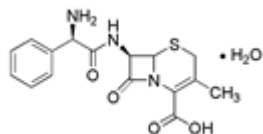
Web site: www.chemimpex.com

Manufacturing site:

825 Dillon Drive

Wood Dale, IL 60191

Product Specifications



Catalogue Number	01592
Product	Cephalexin hydrate Cephalin monohydrate
CAS Number	15686-71-2, 23325-78-2
Molecular Formula	C ₁₆ H ₁₇ N ₃ O ₄ S•H ₂ O
Molecular Weight	365.4

Appearance	White to almost white crystalline powder
Crystallinity	To pass test
Water Content (Karl Fisher)	4 - 8%
pH	3.0 - 5.5
Optical Rotation	[α] _D ²⁰ = 149 - 158 °
Related Substances	Individual impurities : ≤ 1% Total impurities : ≤ 5%
Potency (Anhydrous Basis)	950 - 1030 μg/mg
Grade	Meets USP specification
Storage	Store at 0 - 8 °C
Additional Information	Identification : Test A : Infrared spectrum : Conforms to structure Test B : To pass test

For Laboratory Use Only