

Chem-Impex International, Inc.

Tel: (630) 766-2112

E-mail: sales@chemimpex.com

Shipping and Correspondence:

935 Dillon Drive

Wood Dale, IL 60191

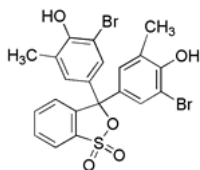
Fax: (630) 766-2218

Web site: www.chemimpex.com

Manufacturing site:

825 Dillon Drive

Wood Dale, IL 60191



Product Specifications

Catalogue Number	01583
Product	Bromocresol purple 5',5''-Dibromo-2-cresolsulfonephthalein
CAS Number	115-40-2
Molecular Formula	C ₂₁ H ₁₆ Br ₂ O ₅ S
Molecular Weight	540.24

Appearance	Grey to light purple or pink to yellow tan powder
Solubility	Clear solution (0.1% EtOH)
Melting Point	241 - 242 °C
UV Ratios	Absorptivity 1%, 1cm (pH 5.2) at λ_{max} . 432 ± 1 nm = 400 - 450 (pH 6.8) at λ_{max} . 589 ± 1 nm = 1000 - 1100
Visual Transition Range	From pH 5.2 (Yellow) to pH 6.8 (Purple)
Loss on Drying	≤ 1% (110 °C, 1h)
Dye content	≥ 95% (By Spectrophotometry)
Grade	ACS reagent
Application	It is pH indicator.
Storage	Store at RT

For Laboratory Use Only