

Chem-Impex International, Inc.

Tel: (630) 766-2112

E-mail: sales@chemimpex.com

Shipping and Correspondence:

935 Dillon Drive

Wood Dale, IL 60191

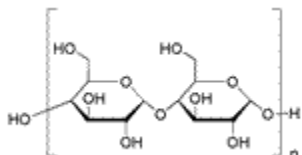
Fax: (630) 766-2218

Web site: www.chemimpex.com

Manufacturing site:

825 Dillon Drive

Wood Dale, IL 60191



Product Specifications

Catalogue Number 01553
Product **Starch potato, soluble**

CAS Number 9005-25-8

Appearance White powder
Solubility To pass test
pH 5.9 - 6.1
Reducing Sugars ≤ 0.047 gms
Loss on Drying $\leq 12\%$
Residue On Ignition $\leq 0.4\%$
Grade Food / Reagent grade
Storage Store at RT
Additional Information Erythrodextrin : Free

For Laboratory Use Only