

# Chem-Impex International, Inc.

---

**Tel:** (630) 766-2112

**E-mail:** sales@chemimpex.com

**Shipping and Correspondence:**

935 Dillon Drive

Wood Dale, IL 60191

**Fax:** (630) 766-2218

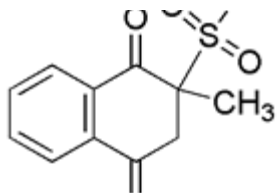
**Web site:** www.chemimpex.com

**Manufacturing site:**

825 Dillon Drive

Wood Dale, IL 60191

---



## Product Specifications

<b>Catalogue Number</b>	01499
<b>Product</b>	<b>Menadione sodium bisulfite</b>
	2-Methyl-1,4-naphthoquinone sodium bisulfite
<b>CAS Number</b>	57414-02-5 , 130-37-0
<b>Molecular Formula</b>	C <sub>11</sub> H <sub>9</sub> NaO <sub>5</sub> S
<b>Molecular Weight</b>	276.2

---

<b>Appearance</b>	Yellowish-white crystalline powder
<b>Cation</b>	Arsenic : ≤ 5 ppm Mercury (Hg) : ≤ 0.1 ppm Chromium (Cr) : ≤ 50 ppm
<b>Water Content (Karl Fisher)</b>	≤ 13%
<b>Assay</b>	≥ 98%
<b>Storage</b>	Store at 0 - 8 °C
<b>Additional Information</b>	Menadione : ≥ 51.5% Sulfoacid Menadione : No precipitation Sodium bisulfite : ≤ 1%

**For Laboratory Use Only**