

Chem-Impex International, Inc.

Tel: (630) 766-2112

E-mail: sales@chemimpex.com

Shipping and Correspondence:

935 Dillon Drive

Wood Dale, IL 60191

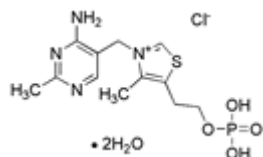
Fax: (630) 766-2218

Web site: www.chemimpex.com

Manufacturing site:

825 Dillon Drive

Wood Dale, IL 60191



Product Specifications

Catalogue Number	01466
Product	Thiamine monophosphate chloride dihydrate Aneurine monophosphate chloride dihydrate
CAS Number	273724-21-3
Molecular Formula	C ₁₂ H ₁₈ ClN ₄ O ₄ PS·2H ₂ O
Molecular Weight	416.8

Appearance	White to off-white powder
Solubility	Colorless to very faint yellow solution (50 mg/mL in water)
Solubility (Turbidity)	Clear solution (50 mg/mL in water)
Elemental Analysis (Theory)	Carbon content : 33.9 - 35.3% Nitrogen content : 13.0 - 13.8%
Infrared Spectrum	Conforms to structure
Purity by HPLC	≥ 99%
Storage	Store at 0 - 8 °C

For Laboratory Use Only