

# Chem-Impex International, Inc.

---

**Tel:** (630) 766-2112

**E-mail:** sales@chemimpex.com

**Shipping and Correspondence:**

935 Dillon Drive

Wood Dale, IL 60191

**Fax:** (630) 766-2218

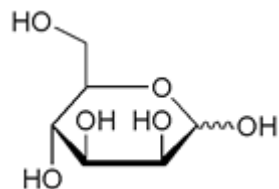
**Web site:** www.chemimpex.com

**Manufacturing site:**

825 Dillon Drive

Wood Dale, IL 60191

---



## Product Specifications

<b>Catalogue Number</b>	01458
<b>Product</b>	<b>D(+)-Mannose</b> D-Mannopyranose
<b>CAS Number</b>	3458-28-4
<b>Molecular Formula</b>	C <sub>6</sub> H <sub>12</sub> O <sub>6</sub>
<b>Molecular Weight</b>	180.16

---

<b>Appearance</b>	White crystalline powder
<b>Odor</b>	Odorless to slightly sweet odor
<b>Melting Point</b>	124 - 136 °C
<b>Bulk density</b>	0.30 - 0.60 g/cm <sup>3</sup>
<b>Heavy Metals</b>	≤ 10 mg/g
<b>Cation</b>	Arsenic (As) : ≤ 1 mg/g Lead (Pb) : ≤ 1 mg/g Mercury (Hg) : ≤ 0.5 mg/g Cadmium (Cd) : ≤ 0.5 mg/g
<b>Mould and Yeast</b>	≤ 100 cfu/g
<b>Optical Rotation</b>	[α] <sub>D</sub> <sup>20</sup> = 13 - 15 °
<b>Infrared Spectrum</b>	Conforms to structure
<b>Loss on Drying</b>	≤ 0.5%
<b>Residual Solvents</b>	To pass test
<b>E. Coli, Salmonella, S.Aureus</b>	Negative
<b>Microbial Count</b>	≤ 1000 cfu/g (TPC)
<b>Particle Size</b>	≥ 60% thr' 20 mesh ≥ 25% thr' 60 mesh ≥ 10% thr' 100 mesh
<b>Purity by HPLC</b>	≥ 99%
<b>Storage</b>	Store at RT

# *Product Specifications*

**Catalog Number: 01458**

---

<b>Additional Information</b>	Identification : To pass test Pesticide residue : To pass test Aflatoxins : $\leq 20$ ppb Tapped density : 0.46 - 0.80 g/cm <sup>3</sup>
-------------------------------	---

**For Laboratory Use Only**