

Chem-Impex International, Inc.

Tel: (630) 766-2112

E-mail: sales@chemimpex.com

Shipping and Correspondence:

935 Dillon Drive

Wood Dale, IL 60191

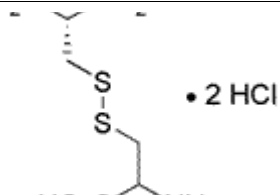
Fax: (630) 766-2218

Web site: www.chemimpex.com

Manufacturing site:

825 Dillon Drive

Wood Dale, IL 60191



Product Specifications

| | |
|--------------------------|---|
| Catalogue Number | 01444 |
| Product | L-Cystine dihydrochloride (H-L-Cys-OH) ₂ •2HCl |
| CAS Number | 30925-07-6 |
| Molecular Formula | C ₆ H ₁₂ N ₂ O ₄ S ₂ •2HCl |
| Molecular Weight | 313.2 |

| | |
|-------------------------------|--|
| Appearance | White to slightly yellow crystalline powder |
| Clarity & Color | Clear and colorless solution |
| Heavy Metals | ≤ 10 ppm (as Pb) |
| Anion | Sulfate : ≤ 0.03% |
| Cation | Ammonium : ≤ 0.03% Iron : ≤ 30 ppm Arsenic : ≤ 2 ppm |
| Optical Rotation | [α] _D ²⁰ = -164 to -174 ° |
| Infrared Spectrum | Conforms to structure |
| Transmission | ≥ 95% |
| Loss on Drying | ≤ 0.3% |
| Related Substances | ≤ 0.4% (TLC) |
| Residue On Ignition | ≤ 0.1% |
| Assay by titration | 98 - 102% |
| Grade | Non-animal source |
| Storage | Store at RT |
| Additional Information | Identification : Ninhydrine reaction : Conforms Silver Nitrate reaction : Conforms |

For Laboratory Use Only