

Chem-Impex International, Inc.

Tel: (630) 766-2112

E-mail: sales@chemimpex.com

Shipping and Correspondence:

935 Dillon Drive

Wood Dale, IL 60191

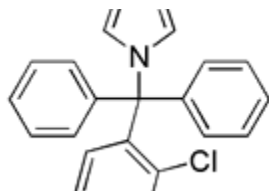
Fax: (630) 766-2218

Web site: www.chemimpex.com

Manufacturing site:

825 Dillon Drive

Wood Dale, IL 60191



Product Specifications

Catalogue Number	01311
Product	Clotrimazole
	1-(2-Chloro- α,α -diphenylbenzyl)imidazole
	1-(<i>o</i> -Chlorotryl) imidazole
CAS Number	23593-75-1
Molecular Formula	C ₂₂ H ₁₇ N ₂ Cl
Molecular Weight	344.8
Appearance	White to off-white crystalline powder
Heavy Metals	≤ 0.001%
Infrared Spectrum	Conforms to reference
Loss on Drying	≤ 0.5%
Related Substances	Compound A: ≤ 0.5% Imidazole: ≤ 0.5%
Residue On Ignition	≤ 0.1%
Purity by TLC	Principal spot is similar to the reference
Storage	Store at RT

For Laboratory Use Only