

Chem-Impex International, Inc.

Tel: (630) 766-2112

E-mail: sales@chemimpex.com

Shipping and Correspondence:

935 Dillon Drive

Wood Dale, IL 60191

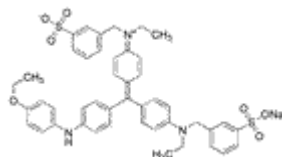
Fax: (630) 766-2218

Web site: www.chemimpex.com

Manufacturing site:

825 Dillon Drive

Wood Dale, IL 60191



Product Specifications

Catalogue Number	01275
Product	Brilliant blue R-250 Brilliant blue R Coomassie brilliant blue R-250
CAS Number	6104-59-2
Molecular Formula	C ₄₅ H ₄₄ N ₃ O ₇ S ₂ Na
Molecular Weight	826

Appearance	Dark purplish brown powder
Solubility	Dark blue-black solution (10 mg/mL in Water)
Loss on Drying	≤ 5%
Dye content	≥ 91%
Storage	Store at RT

For Laboratory Use Only