

Chem-Impex International, Inc.

Tel: (630) 766-2112

E-mail: sales@chemimpex.com

Shipping and Correspondence:

935 Dillon Drive

Wood Dale, IL 60191

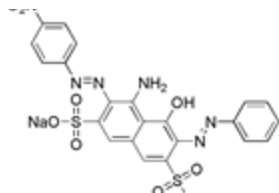
Fax: (630) 766-2218

Web site: www.chemimpex.com

Manufacturing site:

825 Dillon Drive

Wood Dale, IL 60191



Product Specifications

Catalogue Number	01272
Product	Naphthol blue black CI 20470 Amido black 10B
CAS Number	1064-48-8
Molecular Formula	C ₂₂ H ₁₄ N ₆ O ₉ S ₂ Na ₂
Molecular Weight	616.5

Appearance	Dark brown to reddish-black powder
Solubility	Clear blue solution (In distilled water)
Infrared Spectrum	Conforms to structure
UV Ratios	Absorption maxima wavelength: 617-620nm
Loss on Drying	≤ 10%
Dye content	≥ 84%
Storage	Store at RT

For Laboratory Use Only