

# Chem-Impex International, Inc.

---

**Tel:** (630) 766-2112

**E-mail:** sales@chemimpex.com

**Shipping and Correspondence:**

935 Dillon Drive

Wood Dale, IL 60191

**Fax:** (630) 766-2218

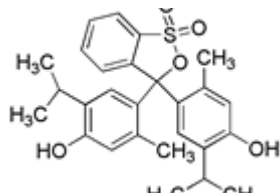
**Web site:** www.chemimpex.com

**Manufacturing site:**

825 Dillon Drive

Wood Dale, IL 60191

---



## Product Specifications

<b>Catalogue Number</b>	01270
<b>Product</b>	<b>Thymolphthalein</b> 5',5''-Diisopropyl-2',2''-dimethylphenolphthalein
<b>CAS Number</b>	125-20-2
<b>Molecular Formula</b>	C <sub>28</sub> H <sub>30</sub> O <sub>4</sub>
<b>Molecular Weight</b>	430.5

---

<b>Appearance</b>	White to off-white solid
<b>Clarity &amp; Color</b>	Clarity of solution : To pass test
<b>Solubility</b>	Insoluble in water
<b>Melting Point</b>	253 °C (Approx.)
<b>Visual Transition Range</b>	pH 8.8 (colorless) to pH 10.5 (blue)
<b>Grade</b>	ACS reagent
<b>Storage</b>	Store at RT

**For Laboratory Use Only**