

Chem-Impex International, Inc.

Tel: (630) 766-2112

E-mail: sales@chemimpex.com

Shipping and Correspondence:

935 Dillon Drive

Wood Dale, IL 60191

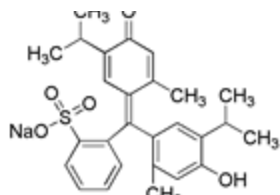
Fax: (630) 766-2218

Web site: www.chemimpex.com

Manufacturing site:

825 Dillon Drive

Wood Dale, IL 60191



Product Specifications

Catalogue Number	01269
Product	Thymol blue sodium salt
	Thymolsulfonephthalein, sodium salt
CAS Number	81012-93-3
Molecular Formula	C ₂₇ H ₂₉ O ₅ SNa
Molecular Weight	488.6

Clarity & Color	To pass the test
Visual Transition Range	Acid Range: pH 1.2 (red) to pH 2.8 (yellow) Alkaline Range: pH 8.0 (yellow) to pH 9.2 (blue)
Storage	Store at RT

For Laboratory Use Only