

Chem-Impex International, Inc.

Tel: (630) 766-2112

E-mail: sales@chemimpex.com

Shipping and Correspondence:

935 Dillon Drive

Wood Dale, IL 60191

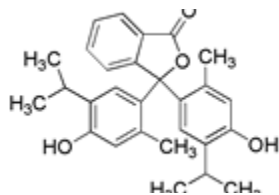
Fax: (630) 766-2218

Web site: www.chemimpex.com

Manufacturing site:

825 Dillon Drive

Wood Dale, IL 60191



Product Specifications

Catalogue Number	01268
Product	Thymol blue
	Thymolsulfonphthalein
CAS Number	76-61-9
Molecular Formula	C ₂₇ H ₃₀ O ₅ S
Molecular Weight	466.6

Appearance	Brownish-green solid
Clarity & Color	Clarity of solution: To pass test
Solubility	Insoluble in water
Visual Transition Range	Acid Range: pH 1.2 (pink) to pH 2.8 (yellow) Alkaline Range: pH 8.0 (yellow) to pH 9.2 (blue)
Grade	ACS reagent
Application	Acid-base indicator.
Storage	Store at RT

For Laboratory Use Only