

Chem-Impex International, Inc.

Tel: (630) 766-2112

E-mail: sales@chemimpex.com

Shipping and Correspondence:

935 Dillon Drive

Wood Dale, IL 60191

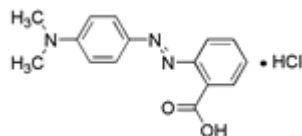
Fax: (630) 766-2218

Web site: www.chemimpex.com

Manufacturing site:

825 Dillon Drive

Wood Dale, IL 60191



Product Specifications

Catalogue Number	01240
Product	Methyl red hydrochloride 4-Dimethylaminoazobenzene-2'-carboxylic acid Acid red 2
CAS Number	63451-28-5
Molecular Formula	C ₁₅ H ₁₅ N ₃ O ₂ •HCl
Molecular Weight	305.8

Appearance	Dark blush violet crystalline powder
UV Ratios	Absorptivity 1%/1cm : pH 4.2 at λ max. 526.4 nm : ≥ 1100 pH 6.2 at λ max. 431.2 nm : ≥ 620
Visual Transition Range	pH 4.2 to pH 6.2
Loss on Drying	$\leq 10\%$ (110 °C at 1 h)
Storage	Store at RT

For Laboratory Use Only