

Chem-Impex International, Inc.

Tel: (630) 766-2112

E-mail: sales@chemimpex.com

Shipping and Correspondence:

935 Dillon Drive

Wood Dale, IL 60191

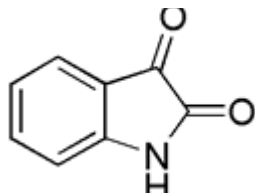
Fax: (630) 766-2218

Web site: www.chemimpex.com

Manufacturing site:

825 Dillon Drive

Wood Dale, IL 60191



Product Specifications

Catalogue Number	00851
Product	Isatin 2,3-Indolinedione 2,3-Dihydroindole-2,3-dione
CAS Number	91-56-5
Molecular Formula	C ₈ H ₅ NO ₂
Molecular Weight	147.13

Appearance	Red crystalline powder
Melting Point	198 - 204 °C
Ash	≤ 0.4%
Purity by HPLC	≥ 98%
Storage	Store at RT

For Laboratory Use Only