

# Chem-Impex International, Inc.

---

**Tel: (630) 766-2112**

**E-mail: sales@chemimpex.com**

**Shipping and Correspondence:**

935 Dillon Drive

Wood Dale, IL 60191

**Fax: (630) 766-2218**

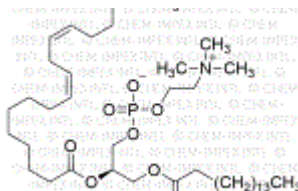
**Web site: www.chemimpex.com**

**Manufacturing site:**

825 Dillon Drive

Wood Dale, IL 60191

---



## Product Specifications

<b>Catalogue Number</b>	00822
<b>Product</b>	<b>Lecithin from soybean</b> 1,2-Diacyl- <i>sn</i> -glycero-3-phosphocholine 3- <i>sn</i> -Phosphatidylcholine
<b>CAS Number</b>	8002-43-5
<b>Molecular Formula</b>	C <sub>42</sub> H <sub>80</sub> NO <sub>8</sub> P
<b>Molecular Weight</b>	758.06

---

<b>Appearance</b>	Yellow to tan granules
<b>Water Content (Karl Fisher)</b>	≤ 1.1%
<b>Acid value</b>	≤ 35 mg KOH/g
<b>Infrared Spectrum</b>	Conforms to structure
<b>Peroxide</b>	≤ 4 meq O <sub>2</sub> /kg
<b>Insoluble material</b>	≤ 0.02% (in hexane)
<b>Assay</b>	≥ 97% (Phospholipids as Acetone insoluble)
<b>Storage</b>	Store at RT

**For Laboratory Use Only**