

Chem-Impex International, Inc.

Tel: (630) 766-2112

E-mail: sales@chemimpex.com

Shipping and Correspondence:

935 Dillon Drive

Wood Dale, IL 60191

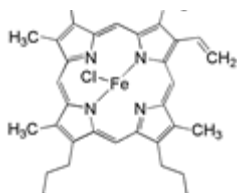
Fax: (630) 766-2218

Web site: www.chemimpex.com

Manufacturing site:

825 Dillon Drive

Wood Dale, IL 60191



Product Specifications

Catalogue Number	00813
Product	Hemin (from porcine) Hemin chloride Chloro(protoporphyrinato)iron(III)
CAS Number	16009-13-5
Molecular Formula	C ₃₄ H ₃₂ ClFeN ₄ O ₄
Molecular Weight	652

Appearance	Dark blue to deep black blue powder or crystalline powder
Cation	Iron (Fe) : ≥ 8.14%
Water Content (Karl Fisher)	≤ 2.0%
Assay	≥ 95% (Ferrous porphyrin)
Storage	Store at 0 - 8 °C

For Laboratory Use Only