

# Chem-Impex International, Inc.

---

**Tel:** (630) 766-2112

**E-mail:** sales@chemimpex.com

**Shipping and Correspondence:**

935 Dillon Drive

Wood Dale, IL 60191

**Fax:** (630) 766-2218

**Web site:** www.chemimpex.com

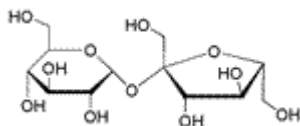
**Manufacturing site:**

825 Dillon Drive

Wood Dale, IL 60191

---

## Product Specifications



<b>Catalogue Number</b>	00811
<b>Product</b>	<b>Sucrose</b> $\beta$ -D-Fructofuranosyl- $\alpha$ -D-glucopyranoside
<b>CAS Number</b>	57-50-1
<b>Molecular Formula</b>	C <sub>12</sub> H <sub>22</sub> O <sub>11</sub>
<b>Molecular Weight</b>	342.3

---

<b>Appearance</b>	White crystalline powder
<b>Solubility</b>	Clear and colorless solution (200% aq.)
<b>Melting Point</b>	160 - 186 °C (dec)
<b>Heavy Metals</b>	≤ 5 ppm (as Pb)
<b>Anion</b>	Chloride (Cl <sup>-</sup> ) : ≤ 0.005% Sulfate and Sulfite (SO <sub>4</sub> <sup>2-</sup> ) : ≤ 0.005%
<b>Cation</b>	Iron (Fe) : ≤ 5 ppm
<b>Optical Rotation</b>	[ $\alpha$ ] <sub>D</sub> <sup>20</sup> = 66.3 - 66.8 °
<b>Loss on Drying</b>	≤ 0.03%
<b>Insoluble material</b>	≤ 0.005%
<b>Titration Acid</b>	≤ 0.0008 meq/g
<b>Grade</b>	ACS reagent
<b>Storage</b>	Store at RT
<b>Additional Information</b>	Invert sugar : ≤ 0.05% Residue after ignition : ≤ 0.01%

**For Laboratory Use Only**