

# Chem-Impex International, Inc.

---

**Tel:** (630) 766-2112

**E-mail:** sales@chemimpex.com

**Shipping and Correspondence:**

935 Dillon Drive

Wood Dale, IL 60191

**Fax:** (630) 766-2218

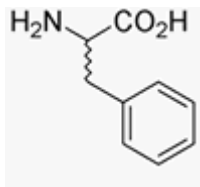
**Web site:** www.chemimpex.com

**Manufacturing site:**

825 Dillon Drive

Wood Dale, IL 60191

---



## Product Specifications

<b>Catalogue Number</b>	00710
<b>Product</b>	<b>DL-Phenylalanine</b>
	DL-Phe-OH
	(+/-)-2-Amino-3-phenylpropionic acid
<b>CAS Number</b>	150-30-1
<b>Molecular Formula</b>	C <sub>9</sub> H <sub>11</sub> NO <sub>2</sub>
<b>Molecular Weight</b>	165.2

---

<b>Appearance</b>	White crystals and crystalline powder
<b>Heavy Metals</b>	≤ 10 ppm
<b>Anion</b>	Chloride (Cl) : ≤ 0.02%
<b>Cation</b>	Lead (Pb) : ≤ 3 ppm Arsenic (As) : ≤ 1 ppm Mercury (Hg) : ≤ 0.1 ppm Cadmium (Cd) : ≤ 1 ppm
<b>pH</b>	5.0 - 6.0
<b>Loss on Drying</b>	≤ 0.2%
<b>Microbial Count</b>	≤ 1000 cfu/g (TPC)
<b>Residue On Ignition</b>	≤ 0.1%
<b>Assay by titration</b>	98.5 - 101.5%
<b>Grade</b>	FCC
<b>Storage</b>	Store at RT

**For Laboratory Use Only**