

Chem-Impex International, Inc.

Tel: (630) 766-2112

E-mail: sales@chemimpex.com

Shipping and Correspondence:

935 Dillon Drive

Wood Dale, IL 60191

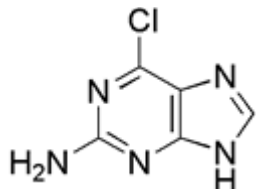
Fax: (630) 766-2218

Web site: www.chemimpex.com

Manufacturing site:

825 Dillon Drive

Wood Dale, IL 60191



Product Specifications

Catalogue Number 00569

Product **6-Chloroguanine**

2-Amino-6-chloropurine

2-Amino-4-chloropyrrolo[2,3-*d*]pyrimidine

CAS Number 10310-21-1

Molecular Formula C₅H₄ClN₅

Molecular Weight 169.58

Appearance Yellowish powder

Melting Point 298-302 °C

Loss on Drying ≤ 0.50%

Residue On Ignition ≤ 0.50%

Assay ≥ 99.0%

Storage Store at RT

For Laboratory Use Only